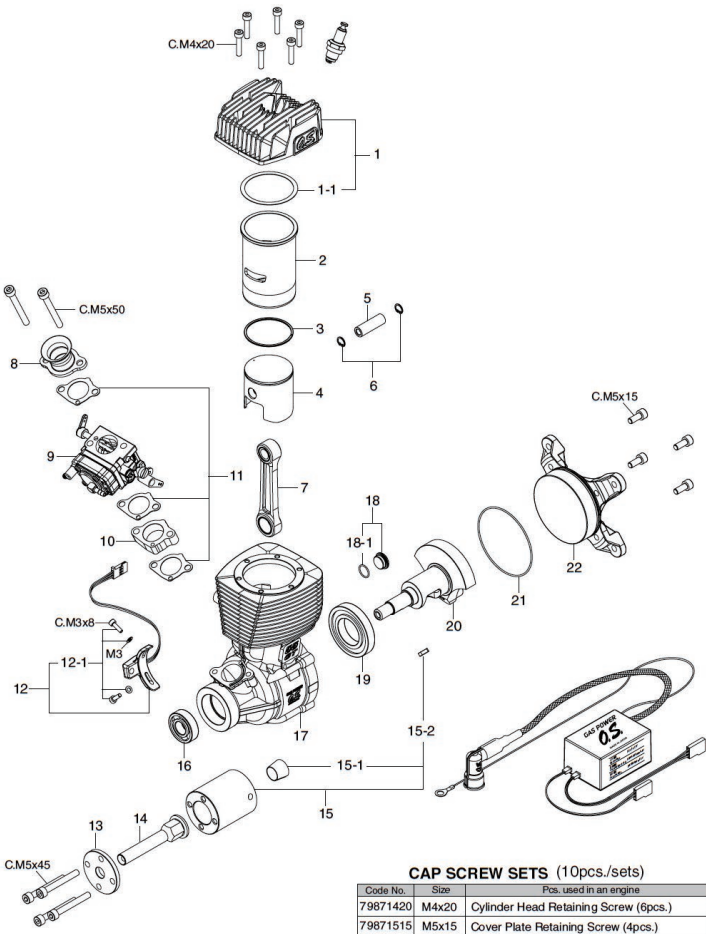


GT55 ENGINE EXPLODED VIEW & PARTS LIST

No.	Code No.	Description
1	29704000	Cylinder Head
1-1	29714100	Head Gasket
2	29703100	Cylinder Liner
3	29703400	Piston Ring
4	29703200	Piston
5	29706000	Piston Pin
6	29717000	Piston Pin Retainer
7	29705000	Connecting Rod
8	29781300	Velocity Stack
9	29781000	Carburetor Complete (WLA-2)
10	29781110	Carburetor Insulator
11	29781500	Carburetor Gasket Set
12	29701200	Rotation Sensor
12-1	29701210	Rotation Sensor Retaining Screw Set
13	29709000	Propeller Washer
14	29702100	Pilot Shaft
15	29708000	Drive Spacer
15-1	29708100	Taper Collet
15-2	29708200	Pararel Key
16	29730000	Ball Bearing (F)
17	29701000	Crankcase
18	29701300	Crankcase Plug
18-1	29701310	"O" Ring
19	29731000	Ball Bearing (R)
20	29702000	Crankshaft
21	29714200	Cover Gasket
22	29707000	Cover Plate
	74002000	Ignition Module (IG-01)
	74002200	Plug Cap Set
	71669000	Spark Plug CM-6
	29714300	Exhaust Gasket GT55

The specifications are subject to alteration for improvement without notice.



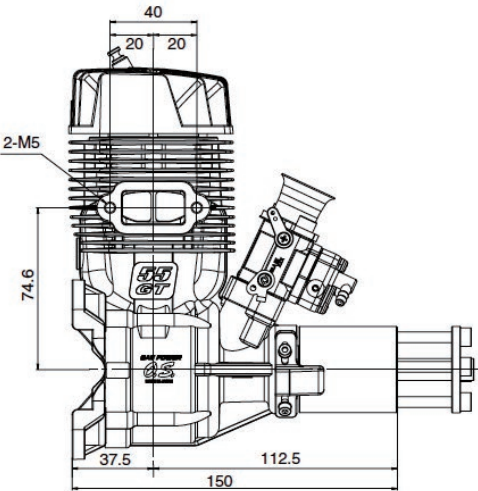
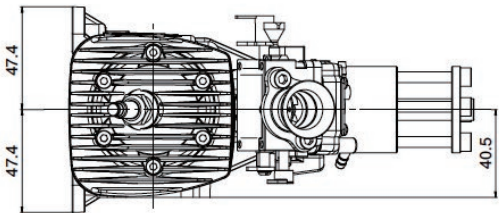
CAP SCREW SETS (10pcs./sets)

Code No.	Size	Pcs. used in an engine
79871420	M4x20	Cylinder Head Retaining Screw (6pcs.)
79871515	M5x15	Cover Plate Retaining Screw (4pcs.)
79871545	M5x45	Propeller Washer Retaining Screw (4pcs.)
79871550	M5x50	Velocity Stack Retaining Screw (2pcs.)

* Type of screw C...Cap Screw

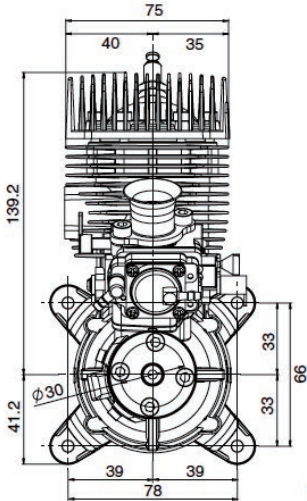
OS ENGINE

THREE VIEW DRAWING



Specifications

■ Displacement	54.93 cc / 3.352 cu.in.
■ Bore	41.2 mm / 1.62 in.
■ Stroke	41.2 mm / 1.62 in.
■ Practical R.P.M.	1,500-8,000 r.p.m.
■ Output	5.5 ps / 5.58 hp / 7,000r.p.m.
■ Weight	1580 g / 55.7 oz. (Engine)
	140 g / 4.94 oz. (Ignition Module)



Dimensions (mm)