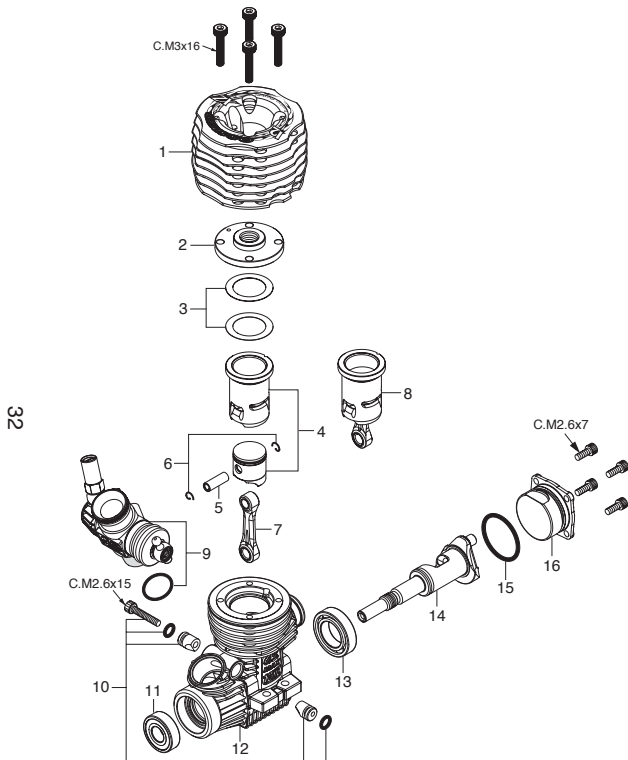


# O.S.SPEED 12XZ (11656)

**O.S.SPEED**

## ENGINE EXPLODED VIEW



32

33

### CAP SCREW SETS (10pcs./sets)

Code No.	Size	Pcs. used in an engine
79871020	M2.6x7	Cover Plate Retaining Screw (4pcs.)
79871050	M2.6x15	Carburetor Retainer Retaining Screw (1pc.)
79871160	M3x16	Cylinder Head Retaining Screw (4pcs.)

\*Type of screw  
C...Cap Screw

**O.S.SPEED**

## ENGINE PARTS LIST

No.	Code No.	Description
* 1	21654000	Outer Head
* 2	21654100	Inner Head
3	21531410	Head Gasket Set (2pcs.)
* 4	21653000	Cylinder & Piston Assembly
5	21536000	Piston Pin
6	21817000	Piston Pin Retainer (2pcs.)
* 7	21655000	Connecting Rod
* 8	21653300	Built-Up Parts Set (No.4.5.6.7)
* 9	21682000	Carburetor Complete (Type 12F(B))
10	21538170	Carburetor Retainer Assembly
11	22631020	Crankshaft Ball Bearing (Front)
* 12	21651000	Crankcase
13	21931100	Crankshaft Ball Bearing (Rear)
* 14	21652000	Crankshaft
15	21921800	Cover Gasket
16	21537000	Cover Plate
	71642060	Glow Plug RP6
	21427200	Exhaust Seal Ring (2pcs.)
	21682950	Dust Cap Set ( 3mm 1pc,16mm 2pcs.)

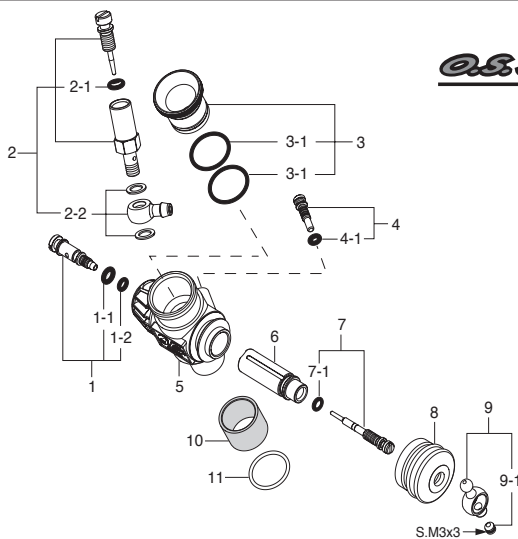
Items marked \* are available for only limited time.  
(One year after discontinuing the production)

The specifications are subject to alteration for improvement without notice.

# 12F(B) (21682000)

**O.S.SPEED**

## CARBURETOR EXPLODED VIEW



**O.S.SPEED**

## CARBURETOR PARTS LIST

No.	Code No.	Description
1	21982700	Mixture Control Valve Assembly
1-1	27881820	"O" Ring (L) (2pcs.)
1-2	22781800	"O" Ring (S) (2pcs.)
2	21681900	Needle Valve Assembly
2-1	27881820	"O" Ring (2pcs.)
2-2	21881950	No.14 Universal Nipple Assembly
3	71533255	Carburetor Reducer (5.5mm Red)
3-1	22615000	"O" Ring (1pc.)
4	21982620	Throttle Stop Screw
4-1	22781800	"O" Ring (S) (2pcs.)
5	21682100	Carburetor Body (w/Thermo Insulator)
6	21682200	Slide Valve
7	21682500	Metering Needle Assembly
7-1	22781800	"O" Ring (S) (2pcs.)
8	21982520	Dust Cover
9	23818430	Ball Link No.5
9-1	26381501	Set Screw
10	21982900	Thermo Insulator
11	22615000	Carburetor Rubber Gasket

\*Type of screw  
S...Set Screw

The specifications are subject to alteration for improvement without notice.